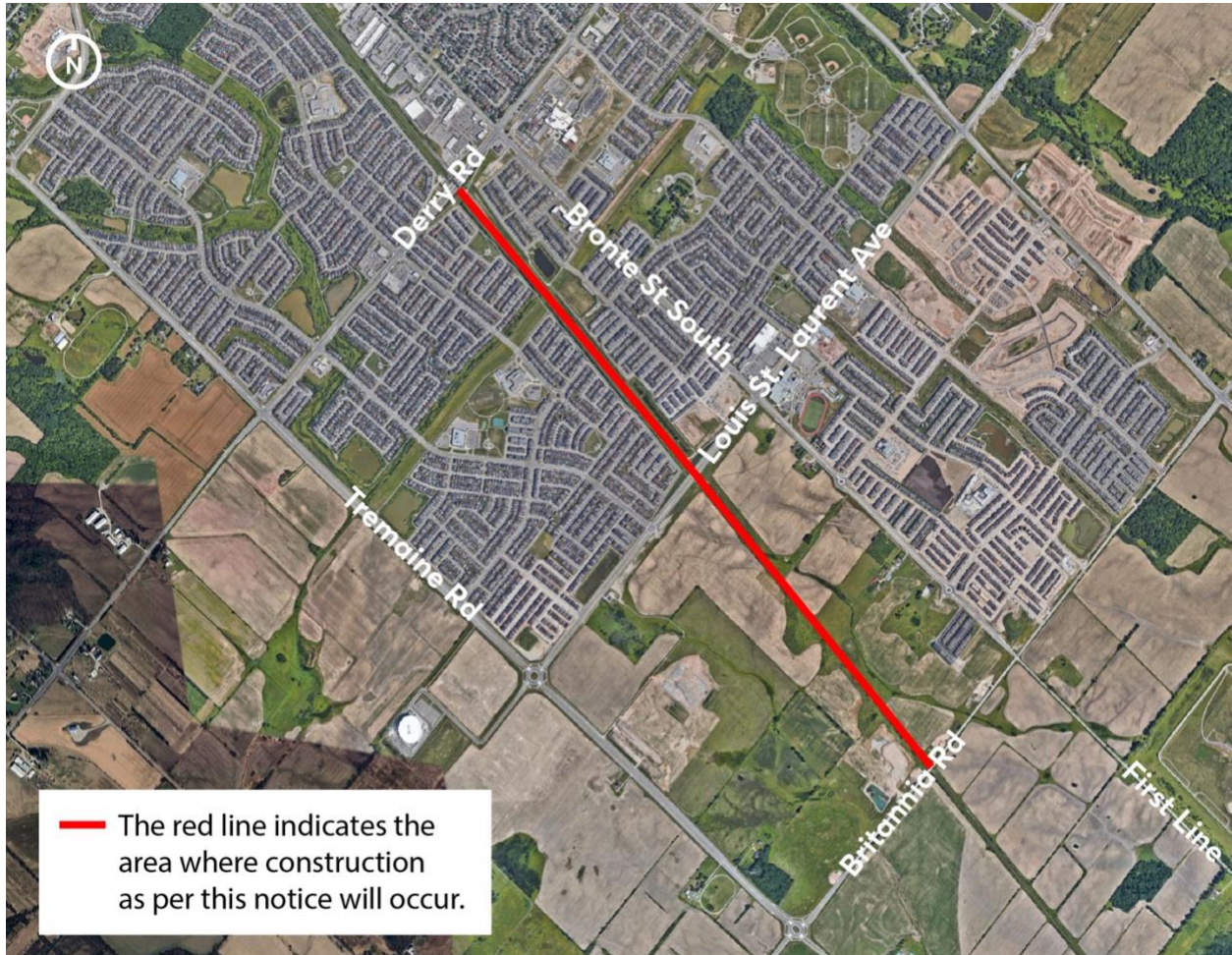


CN Milton Logistics Hub – Construction Update – May 2024

Construction activity within CN’s track corridor between Britannia Road to Derry Road is currently scheduled to take place from May 2024 through to November 2025.



Construction Activity

The area has been scanned to ensure that no birds are nesting on the ground or in the grass areas (bird sweep), and we continue to monitor for all wildlife activity in the vicinity where crews are working.

Crews are commencing with vegetation clearing works, which will take place over the coming weeks, then will proceed with general construction activities.

Equipment to be used for this part of the work include excavators, dozers, compactors, rock trucks, loaders, and pick-up trucks. These machines are equipped with noise reduction back up alarms and meet newer emission standards regulations.

Work will include the following activities:

- Silt fencing and erosion control measures.
- Utility daylighting (exposing underground pipes to natural light using hydro excavation).
- Removal of topsoil or other organic material unsuitable for grading.
- Culvert installation.
- Utilities installation.
- Track construction.

Vehicles and equipment will access this area from CN property south of Britannia Road. There is an access point at Derry Road that may be used on occasion by smaller pick-up trucks.

What to Expect

Anticipated impacts in the vicinity of this construction activity might include:

- Daytime noise from construction equipment and machinery. Excessive noise is not anticipated.
- Potential for dust.

Mitigation measures include white noise back-up beepers on equipment to reduce noise impacts and the use of water trucks and continued air monitoring to manage impacts from dust.

Hours of Work

Work will occur during regular operating hours 7:00 a.m. to 7:00 p.m., Monday through Friday. Residents will be advised in advance of work occurring overnight.

We acknowledge and understand concerns about the potential environmental and community impact that may arise during the construction of the Milton Logistics Hub. CN is committed to measures to mitigate potential effects of Project construction, including those outlined in our Environmental Impact Statement and those included in the 325 conditions required by the federal government's [Decision Statement](#).

For more information about this Project or questions regarding this notice:

Visit: cnmilton.ca

Email: milton@cn.ca

Call: 1.800.216.9466