

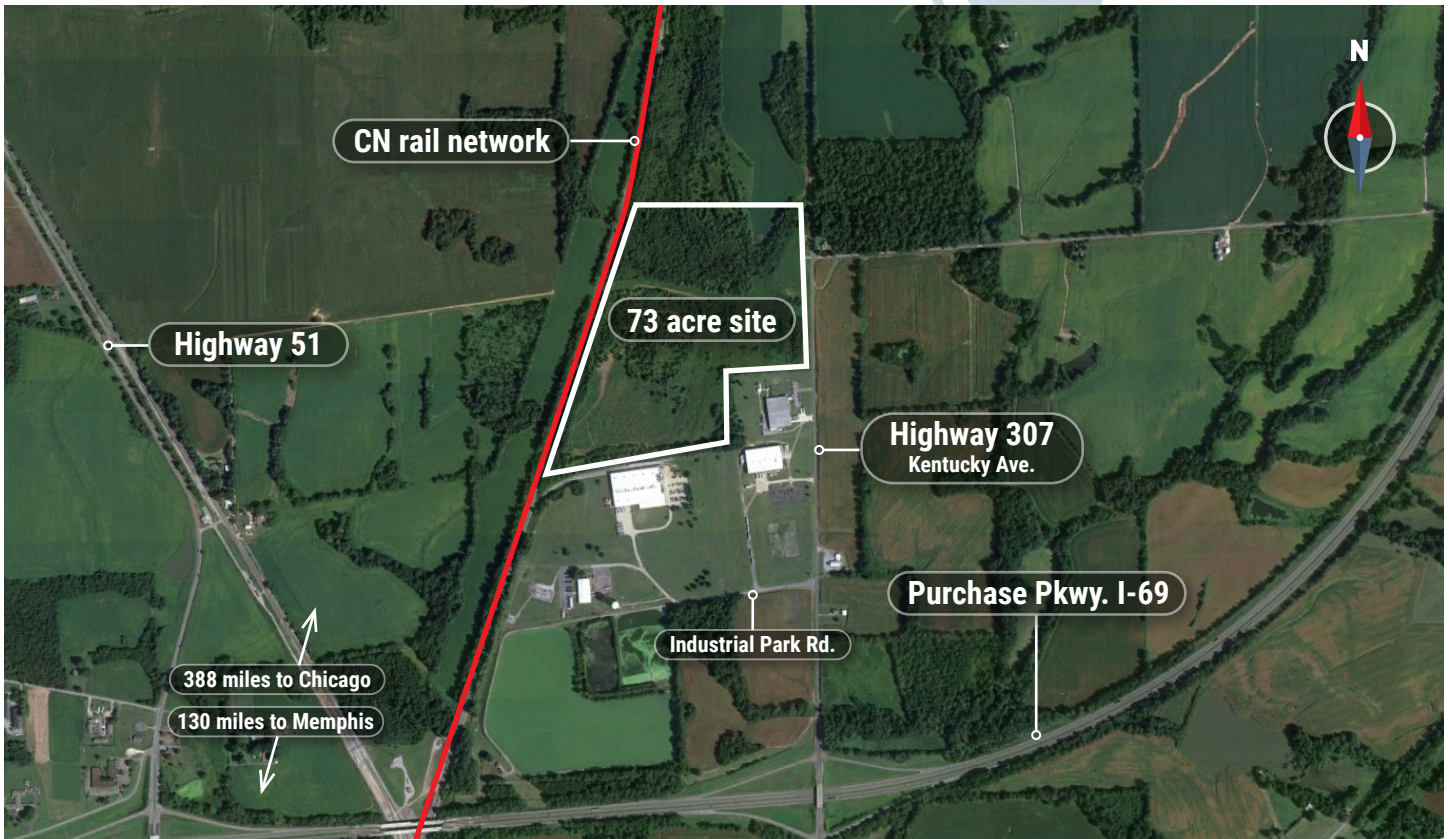


# Enterprise Park at Fulton

Fulton | Kentucky

## Property information:

- Site Name ..... Enterprise Park at Fulton
- Location ..... 920 Kentucky Avenue
- Latitude ..... 36°31'43" N
- Longitude ..... 88°52'33" W
- Ownership ..... Fulton County IDA
- Site Size ..... 73 acres (41 developable)
- Rail Frontage ..... 2,000 ft.



Contact: **Shane Crain**  
shane.crain@cn.ca



Certification review by Austin Consulting is certified accurate as of February 2022

# Enterprise Park at Fulton

Fulton | Kentucky



## This location has been designated a CN Certified Rail Ready Site.

Through our 3rd party partner, Austin Consulting, this site has been evaluated and is now available for development. Our trusted, dedicated team has the resources and expertise in supply chain logistics and facility development, and we're ready to help you get to your final operational success and beyond.

## By selecting a CN Rail Ready Site, you can:

- Reduce development and project build time
- Reduce investment risk by ensuring access to rail
- Increase speed to market for your products
- Lower costs due to mitigated risk



### CN Rail Connectivity:

**Subdivision:** Bluford subdivision milepost 41.5

**Frontage:** 2,000 ft.

**Operations:** Ideal for hook and haul service



### Specific Property information:

**Zoning classification:** M2- Heavy Manufacturing

**Electric:** Fulton Electric System & TVA

**Natural Gas:** City of Fulton

**Water:** City of Fulton

**Wastewater:** City of Fulton

**Telecommunications:** Gibson Connect

**Highways:** Interstate 69 (0.8 mi.) Hwy 307 (0.1 mi.)



### Regulatory Assessments:

Phase 1 environmental site assessment - wetland delineation, endangered species, cultural resources, geotechnical investigation



### Suggested Fit for Use:

Ideal for, but not limited to agricultural and automotive manufacturing



Looking southwest across the site.



Looking north with CN rail network on left.



Contact: **Shane Crain**  
shane.crain@cn.ca



Certification review by Austin Consulting  
is certified accurate as of February 2022