



## Highlights on Western Canadian Grain – Crop Year 2022-23 Week 37

- Grain shipment week 37 saw CN move 551,000 metric tonnes of grain and processed grain products. This figure is under CN’s target guidance of 744,000 metric tonnes (due to lower net customer demand) but on par with average levels.
- An outage at a specific North Shore Vancouver terminal early in grain shipment week 37 reduced unload capacity and required both CN and the customer to work together to actively manage the pipeline by staging some trains enroute and cancelling other trains to minimize congestion at the terminal.
- Residual effects of the service disruption on CN’s Wainwright subdivision resulted in out of car time at Prince Rupert Grain terminal for the first half of the week but returned to normal cadence by the end of the week.
- Approximately 511 empty hoppers were not spotted in the week requested mainly due pipeline management at a specific North Shore terminal and unavailable unload windows to the South Shore of Vancouver.

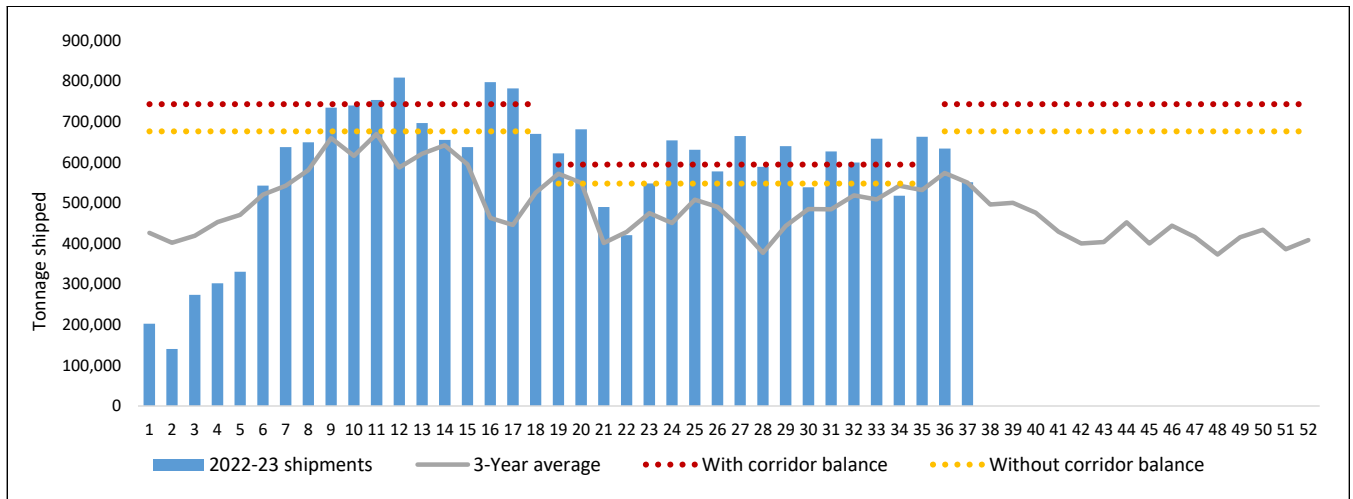


Figure 1. Weekly shipments of grain and processed grain products from western Canada on CN versus maximum end-to-end sustainable supply chain capacity guidance